

KANGA 5•6•7•8 SERIES COMPACT SKID STEER LOADERS

ATTACHMENTS



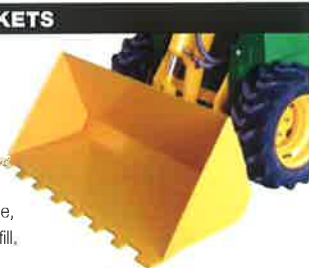
ADVANCED ENGINEERING TURNING HARD WORK INTO EASY BUSINESS

## KANGA MULTI-TASK COMPACT SKID STEER LOADERS

### BUCKETS

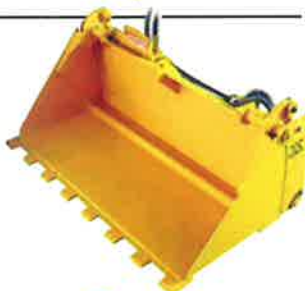
#### STANDARD BUCKET OK11641

0.1m<sup>3</sup> Open shape helps prevent sticky materials from clogging. Volume sized to rated load capacity cannot be exceeded when brim filled with heavy materials, wet sand or gravel. Ideal for everyday use, shifting sand and soil, clean up and backfill.



#### 4 IN 1 BUCKET OK60010

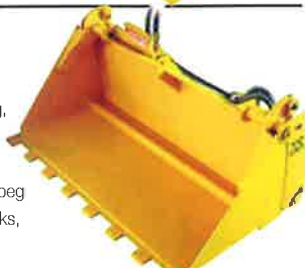
0.1m<sup>3</sup> Enables front blading, back blading, plus all the advantages of a regular bucket. Open jaws to dump at full height. Use jaws for stump, post and tent peg pulling, lifting, placing rail road ties and rocks, broken tree limbs & broken concrete etc.



#### 4 IN 1 BUCKET HEAVY DUTY

OK60012 0.11m<sup>3</sup> NORM.

8 Series loader only. Enables front blading, back blading, plus all the advantages of a regular bucket. Open jaws to dump at full height. Use jaws for stump, post and tent peg pulling, lifting, placing rail road ties and rocks, broken tree limbs & broken concrete etc.



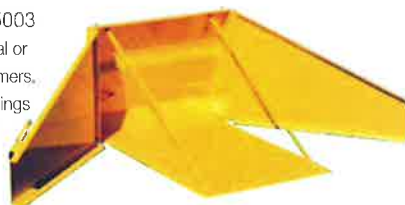
#### MULCH BUCKET OK11613

0.16m<sup>3</sup> For handling bulky, light materials such as bark chips, mulch and sawdust, quickly and easily. Straight cutting edge to scrape floors clean. Use in horse stables, stud farms and feed lots etc.



#### MANURE BUCKET OK65003

0.25m<sup>3</sup> Designed for light material or manure, feed lots and poultry farmers. Individually controlled hydraulic wings easily reach under feed bins and inaccessible places.



#### RUBBLE BUCKET OK50192

1200mm (48") Wide

Ideal for preparing difficult rocky soil for sod and turf. For removal of unwanted rocks and sticks, leaving soil behind. Makes light work of the most difficult site conditions.



#### GRAPPLE BUCKET OK50193

The Grapple attaches to Rubble Bucket. More effective when managing bushy tree limbs, straw, hay, etc. Hydraulically operated. Requires the Rubble Bucket (OK50192).



### BROOMS

#### BUCKET BROOM OK50302

Clean up all manner of debris and leave your construction site clean. Self loading bucket, ideal for side walks, parking lots, factories, industrial sites and feed lots etc. Reverse rotation to push snow and gravel. Broom swings away automatically as bucket is emptied.



#### CATTLE YARD BROOM

OK50306 For sweeping out "Sale Yard" cattle pens where progressively sweeping manure or debris to one side is required. Variable hydraulic tilt left to right ± 22 degrees. 1000mm (40") wide.



#### SNOW BROOM OK50150 Heavy duty,

nylon bristle, road broom slides onto the backfill blade cutting edge to prevent ceramic tiles or feature side walks from damage from steel cutting edge. Wooden broom head extending past Backfill Blade minimises damage to walls from steel blade contact. Requires the Backfill Blade (OK85002).



### POST HOLE • TREE PLANTING

#### STANDARD POWER HEAD OK30001

For hole diameters ranging from 150 - 450mm (6 - 18") Excellent for digging post holes. Maximum RPM 50. Easily digs to 1600mm deep (deeper with the extension L131610).



#### HI TORQUE POWER HEAD OK30311

High torque power for hole diameters ranging from 150 - 750mm (6 - 30") Excellent for post holes, tree planting & sign post foundations. Easily digs to 1600mm deep (deeper with the extension L131610).



#### HI TORQUE POWER HEAD OK30307

SIDE SHIFT

The high torque power head with the added ability to shift sideways to drill against walls, in corners and other such locations.



#### SUPER DIGGER LEGS OK50232

"Super Digger Legs" independently controlled hydraulic rear stabilisers allows you to "DOUBLE" your digging effort when augering. Ideal for stabilizing loader on uneven surfaces.



KANGA MULTI-TASK COMPACT SKID STEER LOADERS

**POST HOLE • TREE PLANTING (cont'd)**

**MIXER BOWL OK50000**

Convert Kanga into a mobile concrete mixer. No more hauling materials to the mixer or concrete to the job. Easily lifting and placing concrete over low walls or into post holes etc. Requires an Auger Power Head attachment (OK30001 or OK30311).

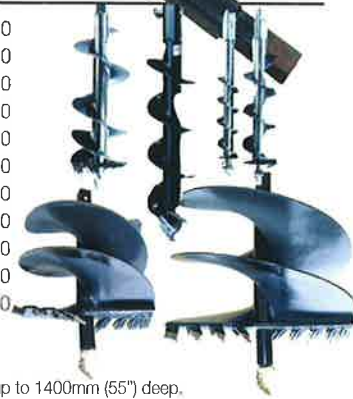


**AUGER EXTENSION L131610**

Fits between power head and auger to increase digging depth.



- AUGERS**
- 150mm (6") L131020
  - 200mm (8") L131120
  - 230mm (9") L131220
  - 250mm (10") L131320
  - 300mm (12") L131430
  - 350mm (14") L131530
  - 400mm (16") L131550
  - 450mm (18") L131570
  - 500mm (20") L131580
  - 600mm (24") L131590
  - 750mm (30") L131600



Tungsten tip pilot and cutting edges for tree planting and sign post foundations up to 1400mm (55") deep. For deeper holes use extension L131610.

**TRENCHERS**

**STANDARD TRENCHER OK41228**

900mm (36") Bar, 150mm (6") Wide.

Side shift feature allows trenching up against walls for irrigation, sewerage, storm water, plumbing and under ground cables. Trencher chain consists of 70% Tungsten faced Rock teeth and 30% Earth teeth. Variable width available.



**K.C.TRENCHER OK40002**

900mm (36") Bar, 150-300mm (6-12") Wide

Heavy duty design and planetary transmission gets toughest trenching done. Using latest technology planetary drive sprocket is elevated up and away from dirt and spoil. Twin soil removing augers leave the trench sides clean. Trencher chain consists of 70% Tungsten-faced Rock teeth and 30% Earth teeth.



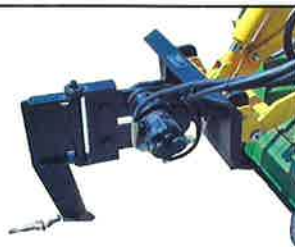
**CRUMBER BAR L140080**

Installs on Standard Trencher or KC Trencher. Spring loaded parallelogram action keeps the crumber blade firmly on the trench floor leaving it free from loose soil & crumbs.



**VIBRATING PLOUGH OK27000**

For trenchless laying of irrigation pipes or cables up to 32mm (1 1/4") dia.



**TRENCHERS (cont'd)**

**IRRIGATION PIPE LAYER**

OK27004 Vibrating Plough

For trenchless laying of irrigation pipes with adjustable hose reel and turf cutter.



**POLY PIPE LAYER OK50080**

12 - 20mm (1/2" - 3/4") pipe or cable

Ideal for laying poly pipe or low voltage cable just under the ground surface quickly. Wheel blade cuts through the turf and the plough head leaves a neat channel. Pipe or cable is then fed directly into the ground via a hollow plough with minimal disturbance to the ground surface. Requires the Multi Tool Bar attachment (OK50061).



**KANGA HOES**

**BACKHOE OK55004** 6-7-8 series loaders only

For ultimate mini loader versatility digging up to 1.8m (70") deep. Features twin independent hydraulic stabilisers, for safer use on uneven ground. Unobstructed 360 degree view allows operator perfect vision of job site. For mature tree transplanting, drainage sewerage excavations, grave digging, installing/inspecting underground cables/pipes etc and general excavating. Multiple bucket widths.



**MINI HOE OK55600**

Low cost attachment ideal for shallow excavations. Multiple bucket widths.



- HOE BUCKETS**
- 150mm (6") Wide OK55303
  - 200mm (8") Wide OK55300
  - 300mm (12") Wide OK55310
  - 400mm (16") Wide OK55320
  - 600mm (24") Wide OK55322

Providing a full range of widths for a variety of purposes.



**LAWN & GARDEN CARE**

**ROCK GRAB OK55323**

The rock grab a versatile tool capable of lifting large rocks and positioning them accurately in desired location. Three tynes provide a stable method for gripping rocks safely and firmly. Ideal for building rock walls.



**TOWBAR OK50123**

5-6-7 series loaders only

Use your Kanga Loader to manoeuvre caravans, trailers and boat trailers in the most confined parking lots, back yards or drive ways. Allows a zero turning radius for most trailers. 5-6-7 series loaders only.



KANGA MULTI-TASK COMPACT SKID STEER LOADERS

LAWN & GARDEN CARE (cont'd)

**LAWN AERATOR** OK50402

For aerating or coring lawns for improved growth and lawn quality. 1000mm (40") wide.



**SLASHER** OK95002

Heavy duty construction. Ideal for clearing lifestyle lots, scrub and overgrown land. Fuel and battery power supplied from the Kanga via a quick connect umbilical. Cutting discharge rear only.



**ROTATING LOG GRAB** OK50600

The Rotating Log Grab is an effective way of moving and manipulating large logs and other similar objects. The Log Grab consists of 3 tynes, capable of gripping any shape, attached to a rotating disc capable of 180° rotation.



**TURF CUTTER** OK50173

With only one moving part (front roller) is virtually maintenance free. The front roller provides stability to set required cutting depth ensuring easy effortless control for removing old turf, transplanting sod, removing turf prior to trenching and replacing it when trenching is completed. 300mm (12") wide.



**CARRYALL LEVELLER** OK50071

1225mm (49") Wide

For transporting bulky items, paving tiles, cement bags, nursery plants, sod, turf and fence palings. Ideal for preparing top soil for sod or turf laying and levelling bedding sand for pavers.



**HYDRAULIC ANGLE BLADE**

OK85002 1200mm (48") Wide

Backfill Blade ideal for backfilling trenches, pushing loose soil, feed lot clean-out. Fingertip hydraulic controlled side shift tilts blade from left to right.



**ROTARY TILLER** OK80003

1000mm (40") Wide

Heavy duty tiller turns the toughest ground into beautiful garden bed, sod and turf bed preparation. Cutting depth 150mm (6") deep



BORERS

**UNDER ROAD BORER POWER HEAD** OK50094

Horizontal power head drops below ground level for under road boring or reaming. Eliminates pavement removal for pipe and cable laying.



**UNDER ROAD BORERS**

65mm (2.5") diam, 1500mm (60") Long L132150

80mm (3") diam, 1500mm (60") Long L132200

Horizontal auger for boring under pavement or driveways for pipes or electrical cable without disturbing original pavement. Augers stack together for boring longer holes. Joiner and D-clip available.

**UNDER ROAD BORER PILOT AUGER**

80mm (3") Diam, L132180

Removable unit to allow stacking of augers for longer holes. To suit 65mm (2.5") and 80mm (3") Augers.

90mm (3.5") Wide Suit 80mm (3") Auger L132190

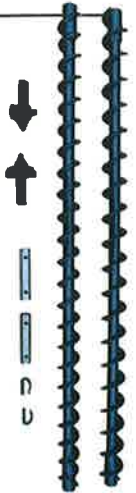
Removable unit to allow stacking of augers for longer holes. To suit 80mm (3") Augers.

**JOINER** L132160

1-1/8" Hex Allows stacking of augers for longer holes.

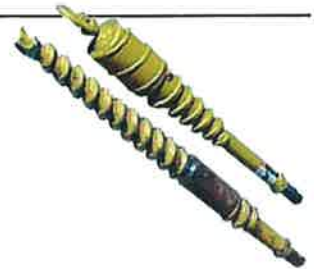
**"D" CLIP** L132170

1-1/8" Hex Allows stacking of augers for longer holes.



**ROD & REAMER KIT** L131990

Horizontal Rod and Reamer for under road boring. SPECIAL ORDER.



TREE CARE

**TERMINATOR STUMP GRINDER**

OK70003 24 hp Honda. For professional tree care people and land care maintenance. Direct drive 24hp Honda engine provides ample power. Umbilical controls fit to Kanga's operating console. Easy to use hydraulic slew and cutting depth controls.



**HYDRAULIC STUMP GRINDER**

OK74503 Smaller hydraulic powered unit for lighter applications. Easy to use hydraulic slew and cutting depth controls.



**LOG SPLITTER** OK75002

Kanga's Log Splitter with high pressure hydraulics the right combination for splitting the toughest of logs. Finger tip hydraulic controls with auto re-set ensure quick and simple operation.



# KANGA MULTI-TASK COMPACT SKID STEER LOADERS

## MULTI-TOOLS

### MULTITool BAR TOOL CARRIER OK50061

For use with rippers, poly pipe layer, tow hitch, forks etc.



### TOW HITCH OK50120

Use your Kanga Loader to manoeuvre caravans, trailers and boat trailers in the most confined parking lots, back yards or drive ways. Allows a zero turning radius for most trailers. Requires the Multi Tool Bar attachment (OK50061).



### RIPPER

- 1 Blade OK50051
- 2 Blade OK50050
- 3 Blade OK50013 (Removable tips for easy maintenance).

Attached to the Multi Tool Bar, the Ripper is the ideal tool for breaking up hard rocky ground for garden beds, or shallow excavations for concrete pavements etc. Requires the Multi Tool Bar attachment (OK50061).



### FORKS

- 750mm (30") Long Tynes OK50033
- 900mm (36"), FOR 8 SERIES ONLY OK50031

Quick attach system has forks in place in seconds. Ideal for lifting and transporting all manner of materials, including fence posts, palings, rail road ties, mature tree root balls and more. Requires the Multi Tool Bar attachment (OK50061).



## SPECIALIST

### VINYL STRIPPER OK50212

150 - 300mm (6" - 12") The Kanga Vinyl Stripper powers effortlessly through lino and vinyl tiles leaving a clean floor ready for relaying. Kanga's dexterity and speed make easy work of negotiating corridors, show rooms and reception areas. Ideal for use when re-flooring supermarkets, shopping centres, schools and hospitals etc. Features a replaceable, self-sharpening reversible blade.



### DRUM HANDLER OK25001

6-7-8 Series loaders only  
For handling 205L (44gal) drums during loading and unloading.  
6-7-8 Series loaders only



### ROCK BREAKER OK87111

Rammer In 9 Rock Breaker ideal for breaking up pavement, sidewalks, driveways. Ideal for internal and external demolition. Must be used with Hydraulic oil cooler for extended periods of use. Eliminates Hand Arm Vibration (H.A.V.)



## SPECIALIST (cont'd)

### CONCRETE GRINDER OK88000

Schibeci,

The Schibeci Poly planer is an aggressive removal tool designed to cut, level or polish. Ideal for use on concrete pavement, factory floors, thermoplastic tiles, epoxy & resins, plastics, rumble strips, plastic and ceramic road reflectors, exposed aggregate finish on concrete, steps in asphalt, yellow and white lines, timbers, mortars, and stencilled concrete.



### DUMP BIN OK50260

Ideal for collection of on site demolition trash and scrap before being transferred into a larger skip bin. The dump bin is on lockable wheels for easy manoeuvring by hand with a hinged side is easily emptied at height.



### BLOCK GRAB OK28000

The block grab ideal for moving up to 6 mud bricks at once quickly, easily and neatly. Also allows for moved blocks to be placed straight into stacks. Allows for easy on site transport and placing of bricks.



### RAMMER POST DRIVER OK29500

Purpose designed for driving road side guide rail posts into the ground and ideal for all types of post driving and earthing rod drilling. Also converts to rock drill mast.



### KERB LIFTER OK50750

Specifically designed to lift gutter or kerb sections and place in correct position. The Kerb Lifter is also ideal for lifting other similar shaped objects in a variety of materials. Eliminates hand labour stress.



### SNOW BLOWER OK78000

Two stage snow blower with variable angle and elevation.



### DEBRIS PULLER OK50015

Debris Puller's adjustable reach and size makes it easy to remove rubbish from difficult to access areas. Clean under conveyer belts and low head height areas.

